

STATE OF OKLAHOMA
 DEPARTMENT OF TRANSPORTATION

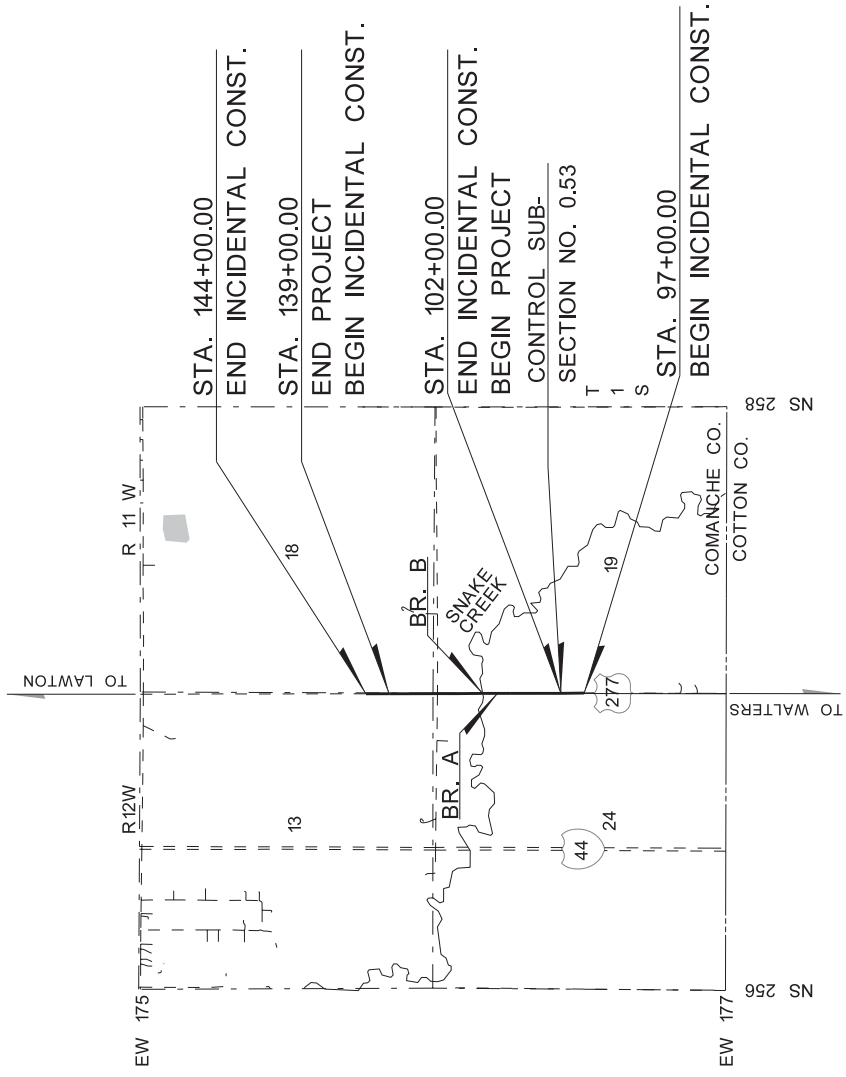
PLAN OF PROPOSED
UNITED STATES HIGHWAY
 FEDERAL AID PROJECT NO. STP-216C(072)SS
 BRIDGE & APPROACHES
 US HIGHWAY 277
COMANCHE COUNTY

INDEX OF SHEETS

0001	TITLE SHEET
0002	TYPICAL SECTION
AB01	GENERAL NOTES AND PAY QUANTITIES (BRIDGE "A")
AB02	GENERAL NOTES AND PAY QUANTITIES (BRIDGE "B")
AR01	GENERAL NOTES AND SUMMARY OF PAY QUANTITIES (ROADWAY)
AT01	SUMMARY OF PAY QUANTITIES AND NOTES (TRAFFIC)
AT02	SUMMARY OF PAY QUANTITIES AND NOTES (SIGNING AND STRIPING)
AX01-AX02	SUMMARY SHEETS (ROADWAY)
B001	GENERAL PLAN AND ELEVATION (BRIDGE "A")
B002-B007	DETAILS OF R.C.B. EXTENSION
B008	GENERAL PLAN AND ELEVATION (BRIDGE "B")
B009-B010	FOUNDATION REPORT
B011	SUBSTRUCTURE STAKING DIAGRAM
B012	DETAILS OF PIPE UNDERDRAIN AND SUBSTRUCTURE EXCAVATION
B013	DETAILS OF ABUTMENT NO. 1
B014	DETAILS OF ABUTMENT NO. 2
B015	DETAILS OF WINGS
B016-B017	DETAILS OF PIERS
B018-B023	DETAILS OF SUPERSTRUCTURE
B024	DETAILS OF 35' TYPE II BEAM
B025	DETAILS OF 60' TYPE II BEAM
B026	DETAILS OF BEARING ASSEMBLY
B027	DETAILS OF APPROACH SLABS
B028	DETAILS OF DRAIN AT END OF BRIDGE
R001	STORM WATER MANAGEMENT PLAN
R001A	DRAINAGE RECORD MAP
R002-R004	EROSION CONTROL DETAIL
R005	MASS DIAGRAM
R006-R008	PLAN AND PROFILE SHEETS
S001-S011	SURVEY DATA SHEETS
T001-T002	TRAFFIC CONTROL DETAIL
T003-T004	SIGNING AND STRIPING
X001-X031	CROSS SECTION SHEETS

0001	TITLE SHEET
0002	TYPICAL SECTION
AB01	GENERAL NOTES AND PAY QUANTITIES (BRIDGE "A")
AB02	GENERAL NOTES AND PAY QUANTITIES (BRIDGE "B")
AR01	GENERAL NOTES AND SUMMARY OF PAY QUANTITIES (ROADWAY)
AT01	SUMMARY OF PAY QUANTITIES AND NOTES (TRAFFIC)
AT02	SUMMARY OF PAY QUANTITIES AND NOTES (SIGNING AND STRIPING)
AX01-AX02	SUMMARY SHEETS (ROADWAY)
B001	GENERAL PLAN AND ELEVATION (BRIDGE "A")
B002-B007	DETAILS OF R.C.B. EXTENSION
B008	GENERAL PLAN AND ELEVATION (BRIDGE "B")
B009-B010	FOUNDATION REPORT
B011	SUBSTRUCTURE STAKING DIAGRAM
B012	DETAILS OF PIPE UNDERDRAIN AND SUBSTRUCTURE EXCAVATION
B013	DETAILS OF ABUTMENT NO. 1
B014	DETAILS OF ABUTMENT NO. 2
B015	DETAILS OF WINGS
B016-B017	DETAILS OF PIERS
B018-B023	DETAILS OF SUPERSTRUCTURE
B024	DETAILS OF 35' TYPE II BEAM
B025	DETAILS OF 60' TYPE II BEAM
B026	DETAILS OF BEARING ASSEMBLY
B027	DETAILS OF APPROACH SLABS
B028	DETAILS OF DRAIN AT END OF BRIDGE
R001	STORM WATER MANAGEMENT PLAN
R001A	DRAINAGE RECORD MAP
R002-R004	EROSION CONTROL DETAIL
R005	MASS DIAGRAM
R006-R008	PLAN AND PROFILE SHEETS
S001-S011	SURVEY DATA SHEETS
T001-T002	TRAFFIC CONTROL DETAIL
T003-T004	SIGNING AND STRIPING
X001-X031	CROSS SECTION SHEETS

CONTROL SECTION NO. 277-16-08
 STATE JOB NO. 27968(04)
 BRIDGE "A" LOCATION NO. 1608-0077X; NBI NO. 03845; (EXTEND)
 BRIDGE "B" LOCATION NO. 1608-0084X; EXISTING NBI NO. 04018; NEW NBI NO. 31434

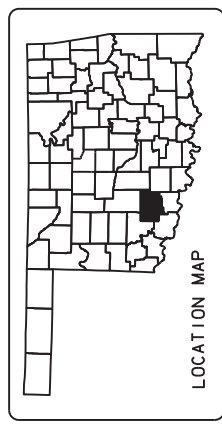


BEGIN STA. 114+70.91	BRIDGE "A"
LENGTH = 23.00'	
END STA. 114+93.91	
BEGIN STA. 117+93.98	BRIDGE "B"
LENGTH = 131.66'	
END STA. 119+25.64	

DESIGN DATA	
ADT 2017	= 2,550
ADT 2037	= 3,550
DHV (2-WAY)	= 408
K (DHV/ADT)	= 12%
D	= 65%
T (% DHV)	= 8%
T (% ADT)	= 11%
T ³ (% ADT)	= 6%
V	= 65MPH
20 YR FLEX ESALS	= 2.06M

SCALES
 PLAN 1" = 50'
 PROFILE HOR. 1" = 50'
 VER. 1" = 5'
 LAYOUT MAP 1" = 1,760'

- CONVENTIONAL SYMBOLS**
- PROPOSED ROAD
 - RAILROADS
 - RANGE & TOWNSHIP
 - SECTION LINES
 - QUARTER SECTION LINES
 - FENCES
 - GROUND LINE
 - EXISTING ROADS
 - BASE LINE
 - GRADE LINES
 - TELEPHONE & TELEGRAPH
 - POWER LINES
 - BUILDINGS
 - OILWELL
 - DRAINAGE STRUCTURES - IN PLACE
 - DRAINAGE STRUCTURES - NEW
 - RIGHT-OF-WAY LINES - EXISTING
 - RIGHT-OF-WAY LINES - NEW
 - CONTROLLED ACCESS
 - RIGHT-OF-WAY FENCE



NOTE: PROJECT LENGTH BASED ON CRL STATION

ROADWAY LENGTH ----- 3,545.34 FT. 0.671 MI.
 BRIDGE LENGTH ----- 154.66 FT. 0.029 MI.
 PROJECT LENGTH ----- 0.700 MI.

PREPARED BY:

 OKLAHOMA DEPARTMENT OF TRANSPORTATION
 DESIGN DIVISION
 ASGHAR MOLLA-ESMAIL, P.E.
 OKLA. REG. NO. 17544
 DATE 9/7/2017

DEPARTMENT OF TRANSPORTATION
 FEDERAL HIGHWAY ADMINISTRATION

DATE APPROVED _____ BY _____
 CHIEF ENGINEER

DEPARTMENT OF TRANSPORTATION
 FEDERAL HIGHWAY ADMINISTRATION

DATE APPROVED _____ BY _____
 DIVISION ADMINISTRATOR

PROJECT NO. STP-216C(072)SS SHEET NO. 001
 COMANCHE COUNTY US-277

TRAFFIC DESIGN
 ENGINEERING MANAGER: T. MAROUF, P.E.
 SQUAD SUPERVISOR: B. ABRAHAM

ROADWAY DESIGN
 PROJECT ENGINEER: R. WOODS, P.E.
 SQUAD SUPERVISOR: S. GREEN

BRIDGE DESIGN
 ENGINEERING MANAGER: A. MOLLA-ESMAIL, P.E.
 SQUAD SUPERVISOR: D. HARUO
 TRANSPORTATION ENGINEER: G. BAPTISTE, W. YANES, H. SKILLINGS